

VectoBac® WG

VectoBac WG is a new formulation of *Bacillus thuringiensis* subsp. *israeliensis* (Bti), a naturally occurring soil bacterium used to control mosquito larvae for over 15 years. It offers the storage stability of a dry product with the application versatility of a liquid spray.

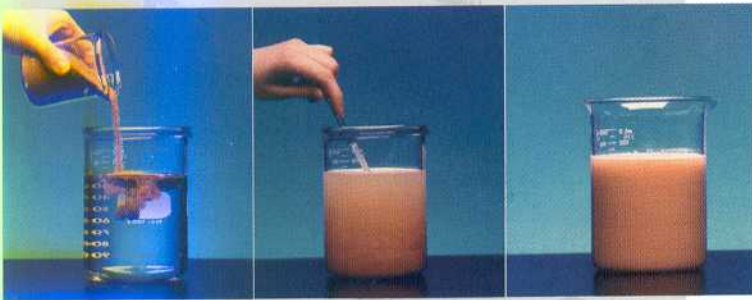


Features

- ◆ Dry Formulation
- ◆ Mixes easily in water
- ◆ Species-specific activity
- ◆ Quickly kills mosquitoes (<24 hours)

Benefits

- ◆ Increase storage shelf-life
- ◆ Aqueous spray application
- ◆ Not harmful to non-target organisms
- ◆ Results assessed quickly in field
- ◆ Assess control program success quickly



Mixing Directions

To Spray 1 hectare:

Mix between 125 and 500 grams of VectoBac WG into 2-150 litres of water

Application Directions

Check for early instar mortality 24 hours after application

Application rates will depend on the habitat and larval population. Use higher rates in marshes and in areas with moderate organic content or high mosquito larval populations

VectoBac WG is a dry product that mixes readily in water for easy spraying.

Small Quantity Dilution Rates

Litres Spray Mixture/Ha
(Grams Needed per Litre of Spray)

Label Rates of VectoBac WG	Final Concentration of WDG Grams/10 litre spray		
	Spray Volume		
Grams/Ha	50 L/Ha	100 L/Ha	200 L/Ha
125	25	12.5	4
250	50	25	12.5
500	100	50	25

Ground or Aerial Application

VectoBac WG may be applied with conventional ground or aerial application equipment with quantities of water sufficient to provide uniform coverage of the target area. The amount of water will depend on weather, spray equipment, and mosquito habitat characteristics. Do not mix more VectoBac WG than can be used in a 72 hour period.

For most ground spraying, apply VectoBac WG in 2 to 150 L water per hectare using hand pump, air blast mist blower, etc. spray equipment.

For aerial application, VectoBac WG can be applied through fixed wing or helicopter aircraft equipped with either conventional boom or nozzle systems or rotary atomisers at a convenient dilution .

Rinse and flush spray equipment thoroughly following each use.

Preparation of Spray Mixes

Spray mixes in backpacks and compressed air sprayers should be made by first putting one half of the desired amount of water into the sprayer, then add the VectoBac WG followed by the rest of the water. Provide moderate agitation by shaking for one minute before spraying.

Spray mixes in power sprayers and aircraft should also be made by first putting one half of the desired amount of water into the mix tank or hopper. Start the mechanical or hydraulic agitation to provide moderate circulation before adding the VectoBac WG, followed by the rest of the water. Continue moderate agitation for one minute prior to spraying.

VectoBac WG suspends readily in water and will stay suspended over normal application periods. Brief recirculation may be necessary if the spray mixture has sat for several hours or longer. **AVOID CONTINUOUS AGITATION OF THE SPRAY MIXTURE DURING SPRAYING.**

Tank Mix Stability

Tests have shown that the VectoBac WG formulation will maintain useful activity for a period of 72 hours when mixed with normal tap water. Diluted VectoBac tank mixes should be recirculated prior to use to maintain uniform suspension.

Storage

VectoBac must be stored in its original, properly labeled container, well sealed and stored in a cool, dry and well ventilated location.

Pesticide Disposal

Wastes resulting from the use of this product may be disposed of on site or at an approved waste disposal facility.

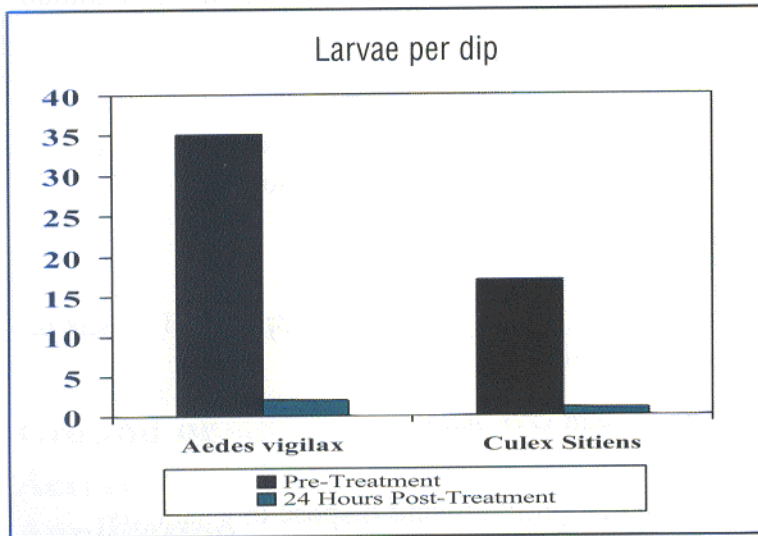
Container Disposal

Triple rinse (or equivalent). Then puncture and dispose in a sanitary landfill, or by incineration, or, if allowable by State and local authorities, by burning. If burned, stay out of the smoke. Do not reuse the container. Do not contaminate potable water, food or feed by storage or disposal.

Precautions: VectoBac can cause corrosive effects to pure aluminum spray system components if diluted product is left in prolonged contact with these parts. Rinse spray system with plenty of clean water after each use.

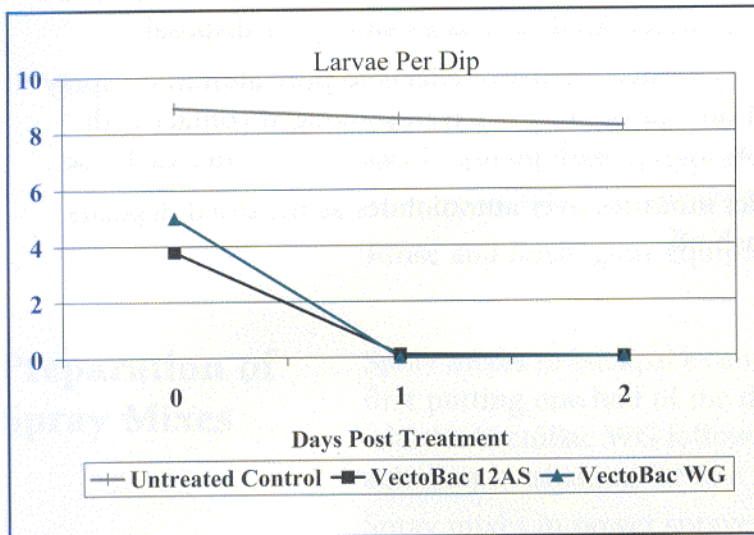
Avoid spraying product mixtures over automobiles as the dried deposits may be difficult to wash off.

VectoBac WG and VectoBac 12AS Performance is Equivalent



Aerial Application

- * Brisbane City Council
- * *Aedes vigilax* in salt marsh
- * Routine aerial application
- * ULV Micronair – Rotary wing
- * 3 litres per hectare volume
- * 400 gm WG/hectare equivalent to 1 litre 12AS/hectare
- * 91% control from WG



Ground Application

- * Multinoma County, Oregon, USA
- * *Aedes vexan* in floodwater
- * Solo backpack
- * 247 grams VectoBac WG/hectare
- * 0.6 litres of water/hectare
- * Equivalent potency/hectare