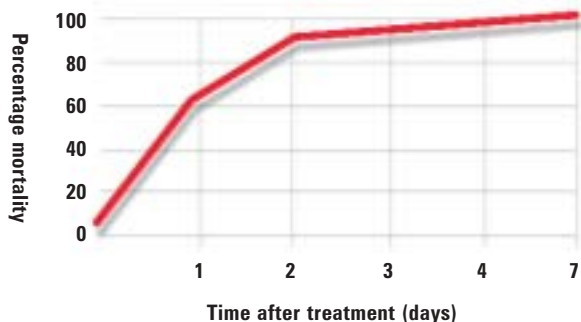


MAXFORCE[®] GOLD

MAXFORCE[®] GOLD

CONTROLS ALL COCKROACHES FASTER



WHICH SPECIES DOES MAXFORCE GOLD ELIMINATE?

Cockroaches are elusive targets but when you use Maxforce Gold you receive long term control both while bait remains in place and through secondary poisoning effects (the "domino effect") of fipronil transfer throughout the cockroach population.



COCKROACH SPECIES	CONTROLLED
German	✓
Brown Banded	✓
Oriental	✓
Australian	✓
Smoky Brown	✓
American	✓



*At last it's here!
Maxforce Gold is
even bigger and better
than Goliath[®].*

Boasting all the attributes of its predecessor... and more, Maxforce Gold offers you an even smarter method of cockroach control.

Maxforce Gold, the more attractive, faster acting cockroach gel, will take control of cockroaches quickly and effectively.

YOUR CONTACTS AT BAYER

Paul Jackson	NSW	0407 386 633
Peter Still	NSW	0408 577 100
Melissa Cameron	QLD	0427 802 844
Colleen von Stein	QLD	0417 501 951
Michael Paton	WA/NT	0428 846 419
David Ahern	WA/NT	0418 915 627
John Skinner	VIC/SA	0407 347 259
Craig Wood	TAS	0419 328 887
Chris Miln	NZ	021 426 094

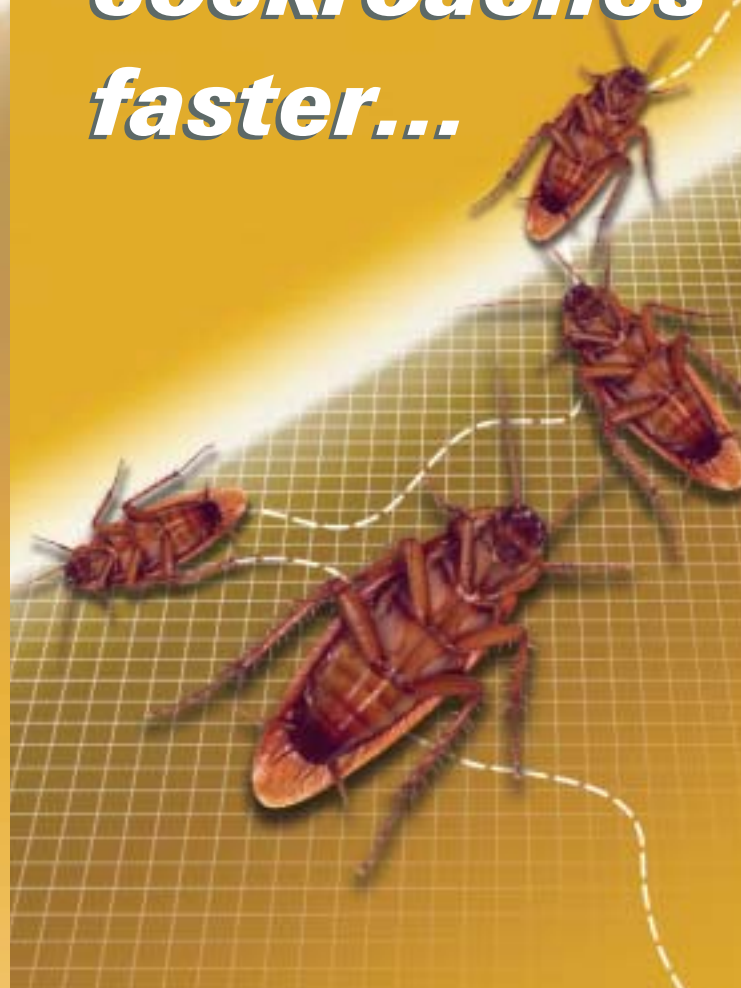


Bayer Environmental Science (a business group of Bayer CropScience)
Australia: 391-393 Tooronga Road, Hawthorn East VIC 3123
Tel: (03) 9 248 6888 Fax: (03) 9248 6803 Website: www.bayercropscience.com.au
New Zealand: 3 Argus Place, Glenfield PO Box 2825, Auckland
Tel: (09) 441 8500 Fax: (09) 441 8645

Maxforce is a registered trademark of Bayer A.G., Leverkusen Germany ACN 000 138 714

MAXFORCE[®] GOLD

*kills
cockroaches
faster...*



MAXFORCE[®]

GOLD

WHY IT WORKS



Less wastage

It has a larger spot which means it's easy to apply and there is less wastage.



Less expensive

The tube is around 40% less expensive than Goliath[®].



Better control

It is more palatable which also means better cockroach control.



Works faster

It works faster and eradicates the existing cockroach population.



More stable

The spots are more stable and don't run or drip like some other gels—even under extreme temperatures—so you can use it in more places more often.

HOW IT WORKS

Maxforce Gold means faster control

Maxforce Gold gel has been specially formulated to deliver faster control. So you only need to place tiny amounts of the gel in strategic locations and:

- There is no inconvenience to residents
- It is safe on most surfaces
- There is no need to empty drawers or larders, cover food or make any special preparations prior to treatment
- Customers don't need to leave their premises when treatment is being conducted

HOW MUCH TO USE

Cockroach species	Low density infestation	High density infestation	Spot size
German	2 spots/m ²	5 spots/m ²	5mm diameter (0.1 gram)
Brown Banded	2 spots/m ²	5 spots/m ²	5mm diameter (0.1 gram)
Oriental	2 spots/m ²	5 spots/m ²	5mm diameter (0.1 gram)
Australian	2 spots/m ²	5 spots/m ²	5mm diameter (0.1 gram)
Smoky Brown	2 spots/m ²	5 spots/m ²	5mm diameter (0.1 gram)
American	5 spots/m ²	5 spots/m ²	5mm diameter (0.1 gram)

Infected cockroaches become mobile bait stations

Maxforce Gold gel turns affected cockroaches into mobile bait stations. So, once cockroaches have eaten Maxforce Gold, their contaminated faeces and bodies can contaminate other cockroaches producing a 'domino effect' within the cockroach population.

Long-lasting

Maxforce Gold tubes are compatible with all available gel gun applicators and because Maxforce Gold stays moist and attractive to cockroaches for months, it goes on working long after you're gone.

WHERE IT WORKS

Where to use Maxforce Gold



1. Directly into small cracks, joins and crevices
2. Areas in which cockroaches forage for food and water
3. Areas where there is the possibility that cockroaches may be introduced
4. Areas in or around cockroach harbourages or from which they may emerge
5. Areas that are frequently travelled by cockroaches such as electrical conduit
6. Areas of poor sanitation
7. Around doors and drains
8. Where food and drink are brought into premises and stored in boxes and crates
9. In dark protected corners

