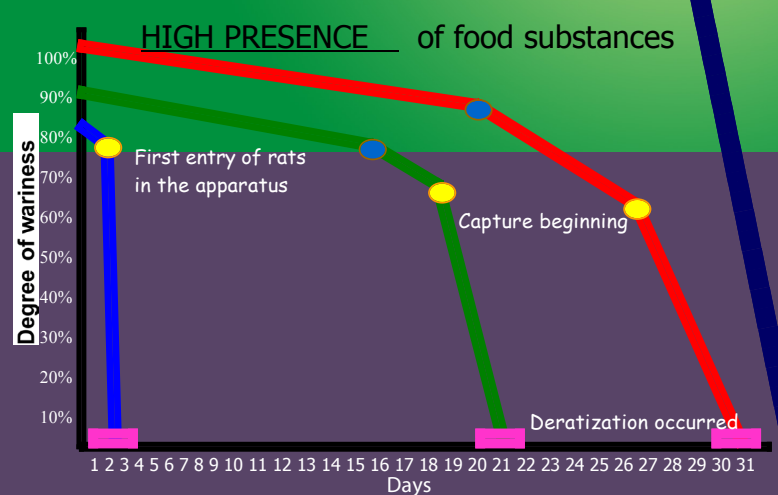
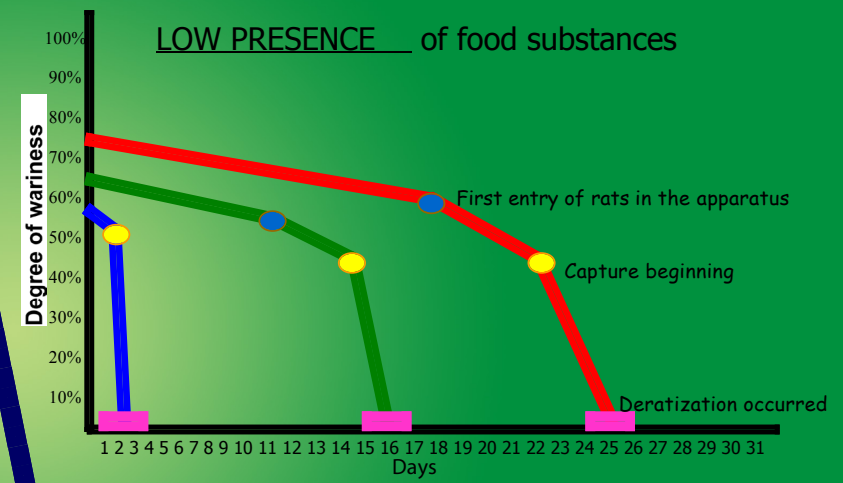
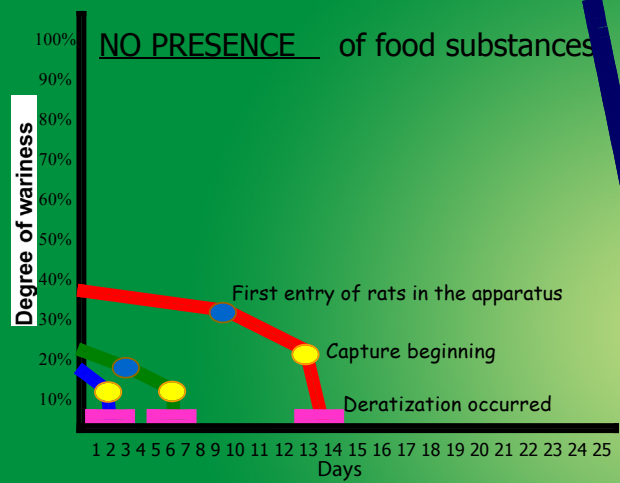




# CAPTURE TIME FORECAST



**LEGEND**

- █ Rats just arrived
- █ Colony of rats already present
- █ With presence of poison
- First entry of rats in the apparatus
- Capture beginning
- █ Deratization occurred



**Technical Enquiries:**  
 Ph: 1800 612 212 - Fax: 1800 657 345  
 Email: [ekosol@bigpond.net.au](mailto:ekosol@bigpond.net.au)

## Getting Started with



*The innovative eco-friendly pest management system for rodents.*

**PLEASE NOTE:**

This leaflet must be read in conjunction with the Instruction Manual to fully understand the operation of the device and to achieve complete effectiveness and the best results.

## EKOFIX - PRESERVATION SOLUTION

**INSTRUCTIONS FOR USE:**

1. Pour 5 litre container of ekofix into lower compartment of the Ekomille
2. Add 13 litres of water to reach the 18 litre level line as marked in the lower compartment

**NOTE:** If temperature of the environment is high additional Ekofix may be required.

**TOPPING UP**  
 As required during inspections use Ekofix to top up to the level line. The level may reduce due to the removal of carcasses and evaporation.



MAXIMUM PRESERVATION TIME		
TEMPERATURE OF THE ENVIRONMENT	WATER ONLY 18 Litres	EKOFIX: 5 Litres WATER: 13 Litres
0-5°C	10 days	120 days
5-15°C	5 days	90 days
15-22°C	2 days	45 days
22-30°C	1 day	30 days
30- 35°C	1 day	10 days
over 35°C	Ekofix 10 Litres & Water 8 Litres	

5 Maddison Court - PO Box 4047 - Bundaberg Sth QLD  
 4670 Phone: 07 4154 2922 Fax: 07 4154 2933



# OPERATING TIPS

IMPORTANT! READ CAREFULLY!

## GENERAL



- Handle the device with care
- Do not touch the device or baits without gloves - it could delay captures
- Do not place objects on the device whilst in operation - you risk reducing its effectiveness
- Do not use other control methods together with ekorodent - especially poisons as they will have a negative impact on its efficiency
- Ekorodent is suitable for use internally and externally, can be exposed to rain, hot and cold weather



## PRESERVING SOLUTION - EKOFIX

- To achieve complete hygiene, ekofix must be used. Refer to back page for Instructions for Use

## SETTING THE BAITS



- Refer to the instructions and illustrations on pages 8 & 9 of the instruction manual
- Only natural food baits are used. Never substitute the food with other bait containing poisons and chemicals. It will not work
- The use of alternative natural baits must be approved by Eko Solutions to ensure effectiveness
- Make sure all 4 of the revolving floors are baited with the animal fat and sunflower seeds as per the instruction manual
- Put a small quantity of seeds where the rodents are active and place the device in close proximity

## POSITIONING THE DEVICE



- Place the device where there is evidence of rodent activity - near their nest or where they are sourcing food - preferably where they will be undisturbed
- The rodents travel path is not the best place to locate the device - this is important where there is a high presence of food
- Face the ladder towards a wall or where it is not exposed - at a distance of about 10 -15cm

## OPERATION - MONITORING



- Do not switch the device on until there is evidence rodents have started to eat the bait
- If rodents have been present or if other control methods are in use it will take time for rodents to enter the device. Rodents are distrustful and suspicious. Refer to back page for the Capture Time Forecast
- The level and presence of competing foods impacts the length of time taken to enter the device

## OPERATION - CAPTURING



- Switch the device on once rodents have visibly started to eat the baits
- Do not remove rodent waste and leftovers from the device
- Check the external Capture Counter regularly
- Always reset the Capture Counter after removing captured rodents. Turn clockwise to zero to reset and do not force the lever

## OPERATION - ONGOING

- If going away for an extended period, it is advisable to switch the device off and top up the baits. On return, switch on again to restart the capture cycle
- Top up the baits as required during periodical inspections
- Top up the ekofix solution as required during periodical inspections. The level will reduce on removal of carcasses and due to evaporation

# STEP-BY-STEP



- Handle the device with care



- Lift out of carton using the strap



- Separate the top from the bottom by using the catches on either side.



- Remove the bait and plastic shovel located in the lower compartment.



- When lifting the device always use the side catches as handles



- Do not touch the device or the baits without gloves. It could delay captures.



- Pour the 5 litre container of Ekofix into the lower compartment. (Not applicable if only water is being used.)



- Add 13 litres of water...



- to reach the 18 litre level line as marked. (If only water is being used fill to the 18 litre level line.)



- Reattach the top section to the bottom and remove the clear lid by carefully using the side clips in preparation for baiting.



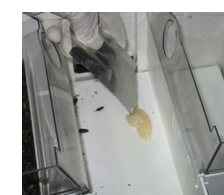
- Remove the clear side cover to place seed in side feed holder.



- Pour seed into the main feed holder.



- Pour seed into the top feed holder. Once all feed holders are full of seed, sprinkle a few pine nuts in.



- Each of the revolving floors must be baited. First apply the animal fat.



- Smear as illustrated. The animal fat acts as an adhesive for the seeds.



- Pour seeds onto animal fat. Sprinkle some pine nuts on as well.



- Repeat the process for the three remaining floors by activating the tripping mechanism.



- Be careful when revolving the floors so as not to lose too much bait.



- Place animal fat, seeds and pine nuts on the ladder as an attractant for the rodents, being careful not to apply too much.



- Replace the clear covers and lid. Ensure the device is turned off and the counter is on zero. *Your Ekomille is ready for operation!*