

**POISON**

**KEEP OUT OF REACH OF CHILDREN  
READ SAFETY DIRECTIONS BEFORE OPENING OR USING**

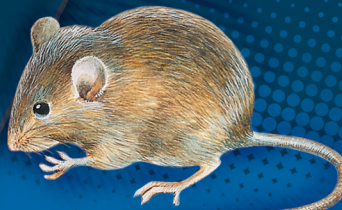
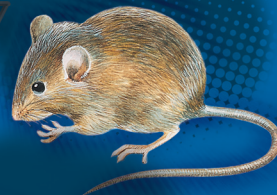
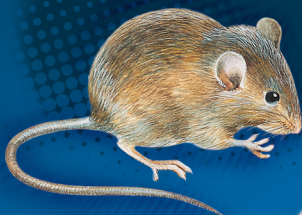
# GENERATION® BLOCK

**SINGLE-FEED RODENTICIDE**

**ACTIVE CONSTITUENT : 0.025 g/kg DIFETHIALONE**

Ready to use bait for the control of rats and mice  
including those resistant to other anticoagulants.

For use in and around agricultural,  
domestic, commercial, public services  
and industrial buildings.



Contains Bitrex®  
A human taste deterrent



**Emergency Phone No.: 0421 946 857**

Manufactured by:  
**LIPHATECH S.A.S.**  
Bonnell BP 3  
47480 PONT DU CASSE  
France

Distributed by:  
**GARRARDS**  
32, Kenworth Place  
BRENDALE QLD 4500  
Ph.: 07 3881 1693

**LIPHATECH**

**NET CONTENTS**  
**1.2 kg**

Contains 60 x 20 g blocks in ready-to-use  
bait station which are illegal to sell separately

## DIRECTIONS FOR USE

### RESTRAINTS

DO NOT apply baits to crops. DO NOT exceed 3 m between bait stations for mice. DO NOT place bait stations in open. DO NOT use this product to control native animals.

SITUATION	PESTS	RATE	CRITICAL COMMENTS
In and around agricultural, commercial, domestic and industrial buildings.	Mice ( <i>Mus musculus</i> )	1 Securi <sup>®</sup> pack every 3 m in infested areas	Place pre-baited bait stations in locations where non-target animals may otherwise access the baits. Protect bait stations from water where possible. Baiting Strategy – Eliminate as far as practicable all alternative food sources. First determine the infested areas. Where droppings are seen, inside ceiling cavities, along runs are locations more probably frequented by mice. Bait infested area and remove as much alternative food as possible. Check bait consumption after 3 days. Replace bait stations where bait has been consumed. Where a high level of consumption is noticed, place more bait stations. Remove bait stations from locations where there has been no take. Inspect again 3 days later and then once a week until feeding ceases. Normally treatment takes 2 to 3 weeks.

**NOT TO BE USED FOR ANY PURPOSE, OR IN ANY MANNER, CONTRARY TO THIS LABEL UNLESS AUTHORISED UNDER APPROPRIATE LEGISLATION.**

### GENERAL INSTRUCTIONS

Generation<sup>®</sup> Blocks contain a human taste deterrent which prevents accidental consumption by children.

Usually mice die within 3 to 5 days after eating the bait.

Blocks are intended for use within an integrated rodent management program as the initial “clean out” bait treatment for rodent infestations within structures and nearby areas (within 2 metres). If reinfestation should occur, you can repeat treatment once. For further treatments, it is strongly advised to alternate with a product containing a different active constituent to avoid the development of genetic resistance. Extended use should not be necessary and is not recommended because of possible resistance development and secondary poisoning of rodent predators such as owls.

Implement rodent proofing measures to limit or restrict rodent access to indoor areas or other areas where infestation is identified as a problem. Manage weeds and other vegetation around buildings to minimise the number of available or potential rodent harbours.

### PRECAUTIONS

Do not allow bait to contaminate foodstuffs or food intended for human or animal consumption. Do not apply bait to crops. Should not be used in areas accessible to children.

### PROTECTION OF WILDLIFE, FISH, CRUSTACEANS AND ENVIRONMENT

DO NOT contaminate streams, rivers or waterways with the chemical or used containers.

This product is hazardous to pigs, cats, dogs, native wildlife and poultry. Place bait stations in locations which are inaccessible to other animals and birds.

This product is restricted to use in and around buildings (within 2 metres) and within enclosed spaces (e.g., drains). Actively search for dead and moribund rodents and remove and destroy them when inspecting bait stations, and when removing bait stations for destruction at the conclusion of baiting. Pest control operators should encourage customers to regularly search for, remove and destroy carcasses and moribund rodents so that dogs, cats or non-target animals DO NOT eat poisoned mice.

### STORAGE AND DISPOSAL

Store in the closed, original container in a dry, cool, well-ventilated area out of direct sunlight.

Break, crush, puncture, and bury empty containers and dispose of unused bait in a local authority landfill. If no landfill is available, bury the containers or unused bait below 500 mm in a disposal pit specifically marked and set up for this purpose, clear of waterways, desirable vegetation and tree roots. Empty containers and product should not be burnt.

Do not use containers which have held bait for any other purpose.

Dispose of carcasses safely by burning or burying. Do not place dead mice in refuse bins or rubbish tips.

At conclusion of baiting program, dispose of bait stations by placing in plastic bags and putting in garbage. Ensure bait stations are removed when rodent activity has ceased.

### SAFETY DIRECTIONS

Poisoning if swallowed. May irritate the eyes. Repeated minor exposure may have a cumulative poisoning effect. Avoid contact with eyes. Do not touch bait. When using the product, wear rubber gloves. If product in eyes, wash it out immediately with water. If on skin and after each baiting, wash hands thoroughly with soap and water. After each day's use wash gloves. Vitamin K1 (Phytomenadione) is antidotal.

### FIRST AID

If poisoning occurs, get to a doctor or hospital quickly.

### MATERIAL SAFETY DATA SHEET

Additional information is listed in the Material Safety Data Sheet which can be obtained from the distributor.

### MANUFACTURER'S WARRANTY AND EXCLUSION OF LIABILITY

This product as supplied is of a high grade and believed to be suitable for any purpose for which it is expressly recommended and must be used in accordance with the Directions for Use given on the label. No responsibility is accepted in respect of the product save those non-excludable conditions implied by any Federal and State legislation or law of a territory.

Generation<sup>®</sup> is a Registered Trademark of LIPHATECH S.A.S.

Bitrex<sup>®</sup> is a Registered Trademark of Macfarlan Smith Limited.

**BN            DOM            APVMA Approval No. 62694/1.2kg/1209**